

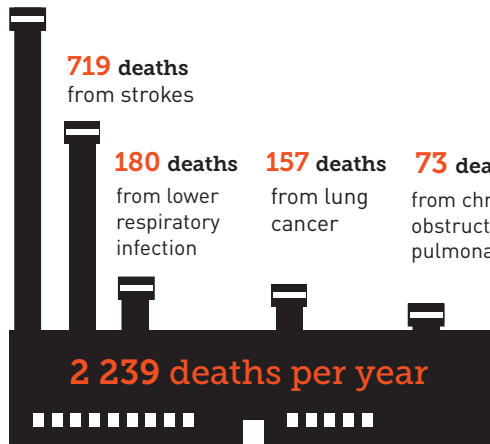


Eskom's coal-fired power stations make us ill and kill thousands of South Africans every year

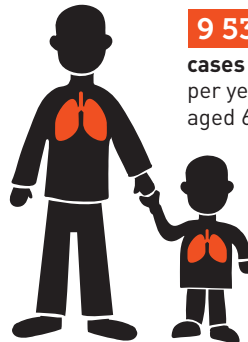
Source: Dr Mike Holland, Health impacts of coal fired power plants in South Africa, 2017

Air pollution from Eskom's coal-fired power stations cause:

1110 deaths
from ischaemic (coronary) heart disease



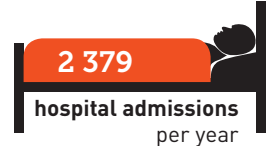
2 781 cases of chronic bronchitis
per year in adults



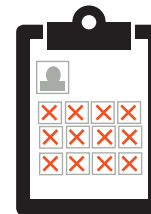
9 533 cases of bronchitis
per year in children aged 6 to 12



94 680 days of asthma symptoms
per year in children aged 5 to 19



2 379 hospital admissions
per year



996 628 lost working days
per year

3 972 902 days of restricted activity
per year



The total costs associated with these impacts exceed

USD2.3 billion per year

Based on the emissions from each Eskom power station, the most lethal Eskom power stations are:

Medupi:

- 453 cases of chronic bronchitis,
- 1552 cases of bronchitis in children ages 6-19,
- 15 412 asthma symptom days in children,
- at a cost of more than \$386 million per year

364 deaths per year

Matimba:

262 deaths per year

Kendal:

210 deaths per year

Lethabo:

204 deaths per year

Matla:

192 deaths per year

Tutuka:

192 deaths per year

These numbers exclude significant impacts of air pollution from mining (such as the effects of coal dust on workers and the public), the transportation of coal, and water contamination.

Annual health impacts of emissions from Eskom's coal-fired power stations

Annual health impacts linked to coal-fired generation in South Africa

	Cases, etc.	Value, \$int, millions
Equivalent attributable deaths:		
• Lung cancer	157	
• Ischaemic heart disease	1,110	
• Chronic obstructive pulmonary disease	73	
• Stroke	719	
• Lower respiratory infections	180	
Total equivalent attributable deaths	2,239	2,121.94
Chronic bronchitis (adults, cases)	2,781	64.64
Bronchitis (children 6 to 12)	9,533	2.19
Equivalent hospital admissions (all ages)	2,379	2.79
Restricted activity days (all ages)	3,972,902	132.72
Asthma symptom days (children 5 to 19)	94,680	1.44
Lost working days (adults)	996,628	47.05
Total Costs		2,372.78

Health impacts and associated costs (\$int, millions) allocated to individual Eskom power stations

	Total equivalent annual deaths	Chronic bronchitis (adult, cases)	Bronchitis (children 6 to 12 years)	Equivalent hospital admissions (all ages)	Restricted activity days (all ages)	Asthma symptom days (children 5 to 19 years)	Lost working days (adults)	Total costs, \$int, millions
Arnot	79	98	335	84	139,569	3,326	35,012	83.36
Camden	84	104	357	89	148,980	3,550	37,373	88.98
Duvha U 1-3	143	178	609	152	253,845	6,050	63,679	151.61
Grootvlei	58	72	247	62	103,011	2,455	25,841	61.52
Hendrina	105	130	445	111	185,467	4,420	46,525	110.77
Kendal	210	261	894	223	372,400	8,875	93,419	222.41
Kriel	141	176	602	150	250,866	5,979	62,931	149.83
Komati	28	35	120	30	50,188	1,196	12,590	29.97
Lethabo	204	253	868	217	361,646	8,619	90,721	215.99
Majuba	177	219	752	188	313,579	7,473	78,663	187.28
Matimba	262	326	1,117	279	465,404	11,091	116,749	277.96
Matla	192	238	817	204	340,278	8,109	85,361	203.23
Medupi	364	453	1,552	387	646,706	15,412	162,230	386.24
Tutuka	192	239	818	204	340,963	8,126	85,533	203.64
Totals	2,239	2,781	9,533	2,379	3,972,902	94,680	996,628	2,373

