

ADDITIONAL ESG DATA TO THE 2024 SUSTAINABILITY REPORT

May 2025

The following non-financial performance indicators should be read in conjunction with Crédit Agricole S.A.'s sustainability report published within the 2024 Universal registration document. These additional indicators are related to the 1st January to 31 December 2024 reporting period, and the scope of consolidation is similar to the scope of the sustainability report.

Measures related to the environmental footprint of Crédit Agricole S.A.'s operations

Energy

- Energy consumption has decreased since 2022 as a result of our actions regarding energy sufficiency detailed in the 2024 Universal registration document.
- The share of renewable electricity in the energy mix has been increasing since 2022, reflecting the Crédit Agricole Group's commitment to reach 100% of renewable energy consumption by 2030.

Indicators	Unit	2024	2023	2022
ENERGY CONSUMPTION	MWh	401,330	398,861	461,239
Power	MWh	318,413	307,409	347,939
of which non-renewable electricity	MWh	34,411	35,905	48,769
consumption excluding data centers	MWh	30,749	30,838	36,327
data center consumption	MWh	3,662	5,067	12,442
of which renewable electricity	MWh	284,002	271,504	299,17
consumption excluding data centers	MWh	203,701	209,732	236,03
data center consumption	MWh	80,301	61,771	63,14
Heating network	MWh	19,281	19,082	24,108
Cooling network	MWh	5,916	5,605	5,814
Gas	MWh	55,356	63,396	78,571
Fuel oil	MWh	2,364	3,369	4,807
SHARE OF RENEWABLE ELECTRICITY	%	89	88	86
Scope covered	%	100%	100%	100%

Water

Indicators	Unit	2024	2023	2022
WATER CONSUMPTION	m3	669,710	617,970	668,977
Scope covered	%	100%	100%	100%

Waste

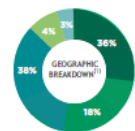
Indicators	Unit	2024	2023	2022
TOTAL AMOUNT OF WASTE COLLECTED	Tons	4,222	3,875	4,189
Of which reused, recovered or recycled	tons	3,648	3,202	3,531
PORTION OF WASTE REUSED, RECOVERED OR RECYCLED	%	86	83	84
Scope covered	%	100%	100%	100%

Key figures of the Grameen Crédit Agricole Foundation in 2024

KEY FIGURES OF THE FOUNDATION

December 2024

ACTIVITY



(1) Portfolio's geographic breakdown
(2) Fragile countries according to the World Bank and
OECD lists
(3) Breakdown by number of funded institutions.
Tier 1 : >\$100M portfolio
Tier 2 : \$10-100M portfolio
Tier 3 : <\$10M portfolio
(4) Breakdown by number of social impact enterprises

SUPPORTED ORGANISATIONS



TYPES OF INSTITUTIONS ⁽³⁾
18% LARGE INSTITUTIONS (TIER 1)
53% MEDIUM INSTITUTIONS (TIER 2)
29% SMALL INSTITUTIONS (TIER 3)

* Including 5 partners supported exclusively in
technical assistance



BUSINESS SECTORS ⁽⁴⁾
63 % AGRIBUSINESS
25 % FINANCIAL SERVICES
13 % CULTURE/EDUCATION

TECHNICAL ASSISTANCE



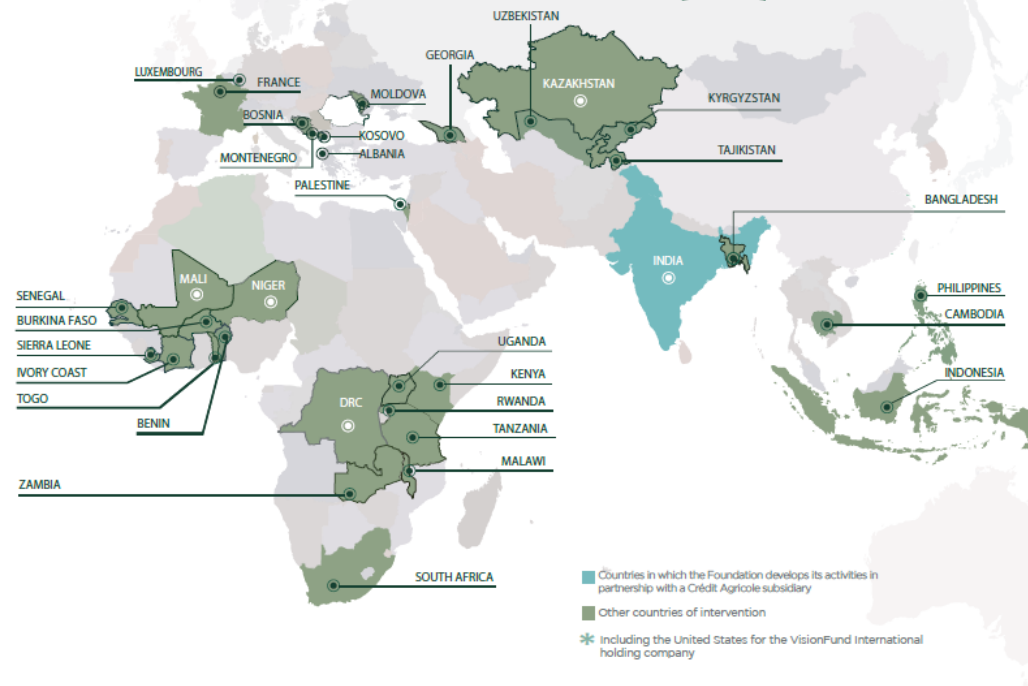
53 MISSIONS COORDINATED
26 ORGANISATIONS SUPPORTED
15 COUNTRIES OF OPERATION

SOCIAL IMPACT



75 % WOMEN BENEFICIARIES
OF MICROCREDITS
76 % MICROFINANCE CLIENTS
IN RURAL AREAS

COUNTRIES OF INTERVENTION



Examples of projects supported by the Foundation can be found on its website: <https://www.gca-foundation.org/>