

APRIL trashing rainforests for pulp

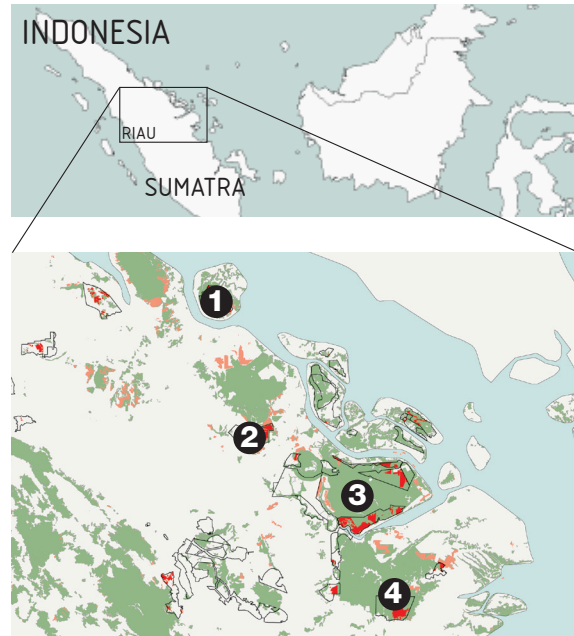
Case studies: 4 peatland frontiers of deforestation

'The majority of APRIL Indonesia's fibre plantations in Riau, Indonesia, are located on tropical peatlands.' – APRIL website

Greenpeace evidence reveals:

- Extensive recent deforestation by APRIL suppliers in four peatland landscapes in Riau.
- In 2012 alone, APRIL suppliers planned to clear some 60,000 hectares of rainforest (equivalent to 230 football pitches a day).
- The concessions within the three mainland landscapes all fall within tiger habitat.

- 2009-2011 Deforestation inside APRIL supply concessions
- 2009-2011 Deforestation outside APRIL supply concessions
- ▬ APRIL supply concessions
- Remaining rainforest 2011



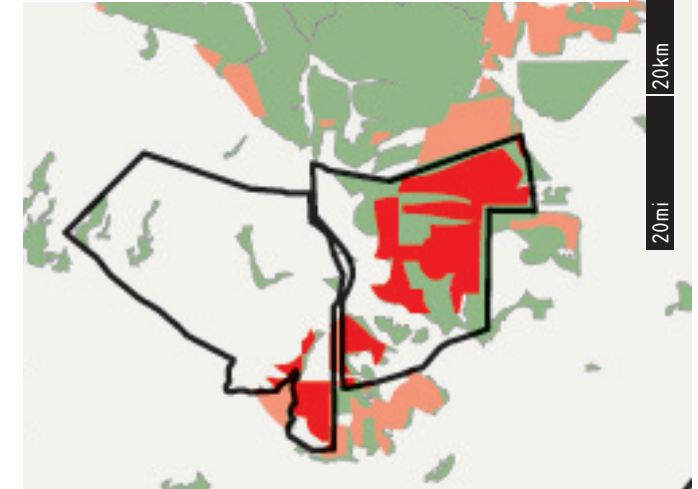
Peatland landscape ① Pulau Rupert

Concession: PT Sumatera Riang Lestari



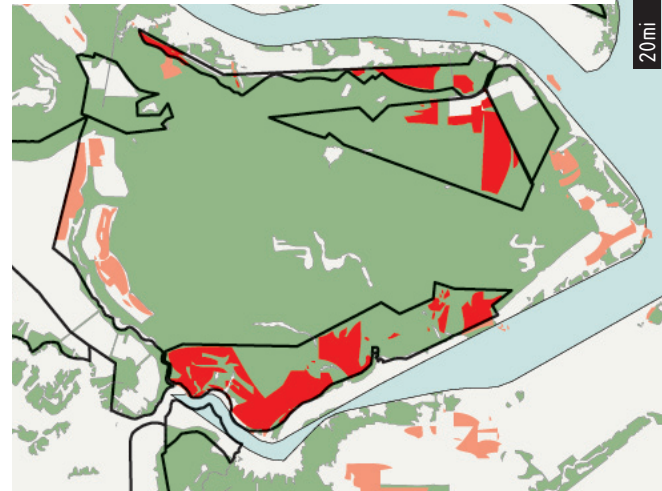
Peatland landscape ② Giam Siak Kecil

Concessions: PT Seraya Sumber Lestari and PT Riau Andalan Pulp & Paper



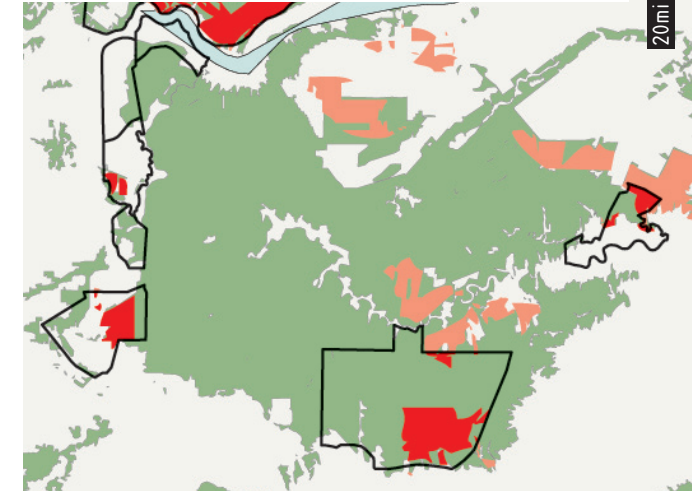
Peatland landscape ③ Kampar

Concessions: PT Uniseraya, PT Riau Andalan Pulp & Paper, PT Triomas, PT Ekawana Lestari Darma



Peatland landscape ④ Kerumutan

Concessions: PT Selaras Abadi Utama, PT. Rimba Mutiara Permai, PT. Mitra Tani Nusa Sejati, PT. Bukit Raya Pelalawan, PT. Mitra Kembang Selaras, PT Sumatera Riang Lestari and PT Bina Daya Bintara



Source: MoF (online) Deforestation 2009-2011, Ministry of Forestry Indonesia – National Forest Monitoring System <http://nfms.dephut.go.id/monitoring/>